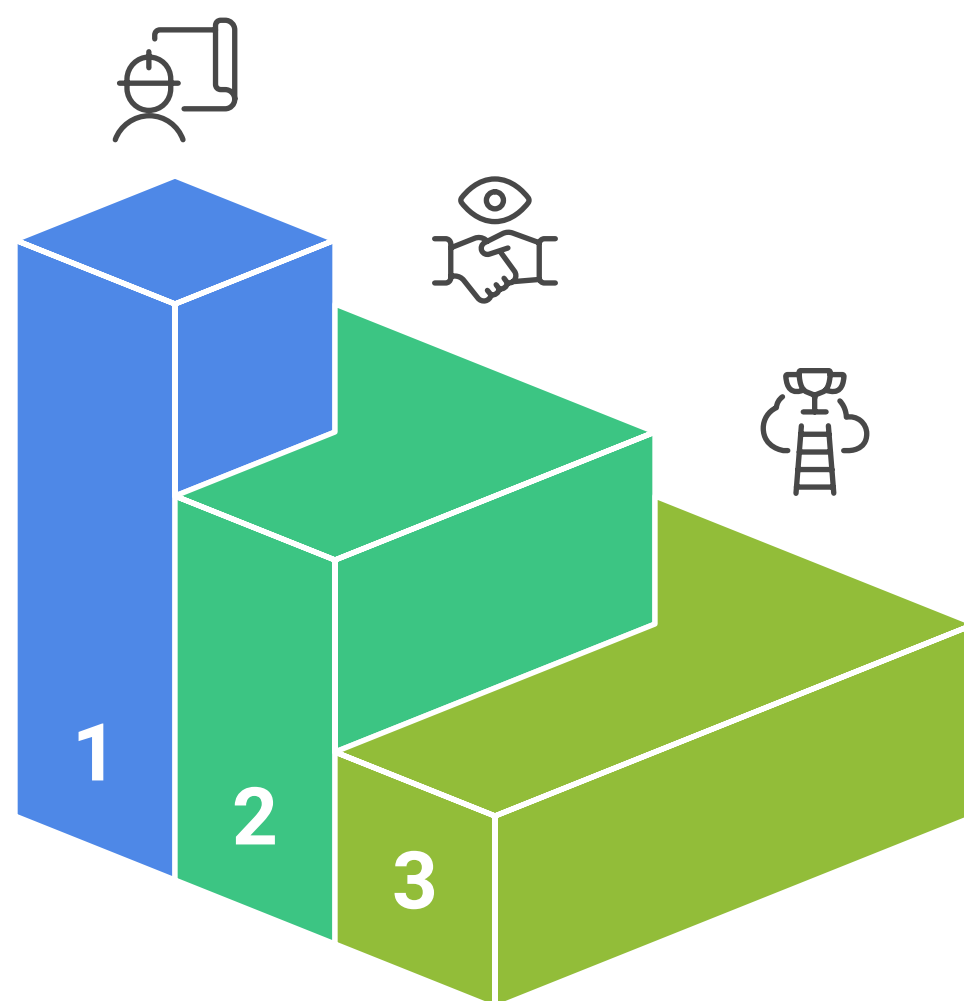




Company Background of M/S SR Construction Company

This document provides an overview of M/S SR Construction Company, detailing its establishment, growth, and contributions to the engineering and construction sectors in Pakistan. Established in 2013, the company has made significant strides in delivering quality services to both private and public sectors, showcasing its commitment to excellence and reliability.

Journey of SR Construction Company



Establishment

Founded in 2013, setting the foundation for future growth.

Quality Services

Delivering high-quality services to both private and public sectors.

Excellence & Reliability

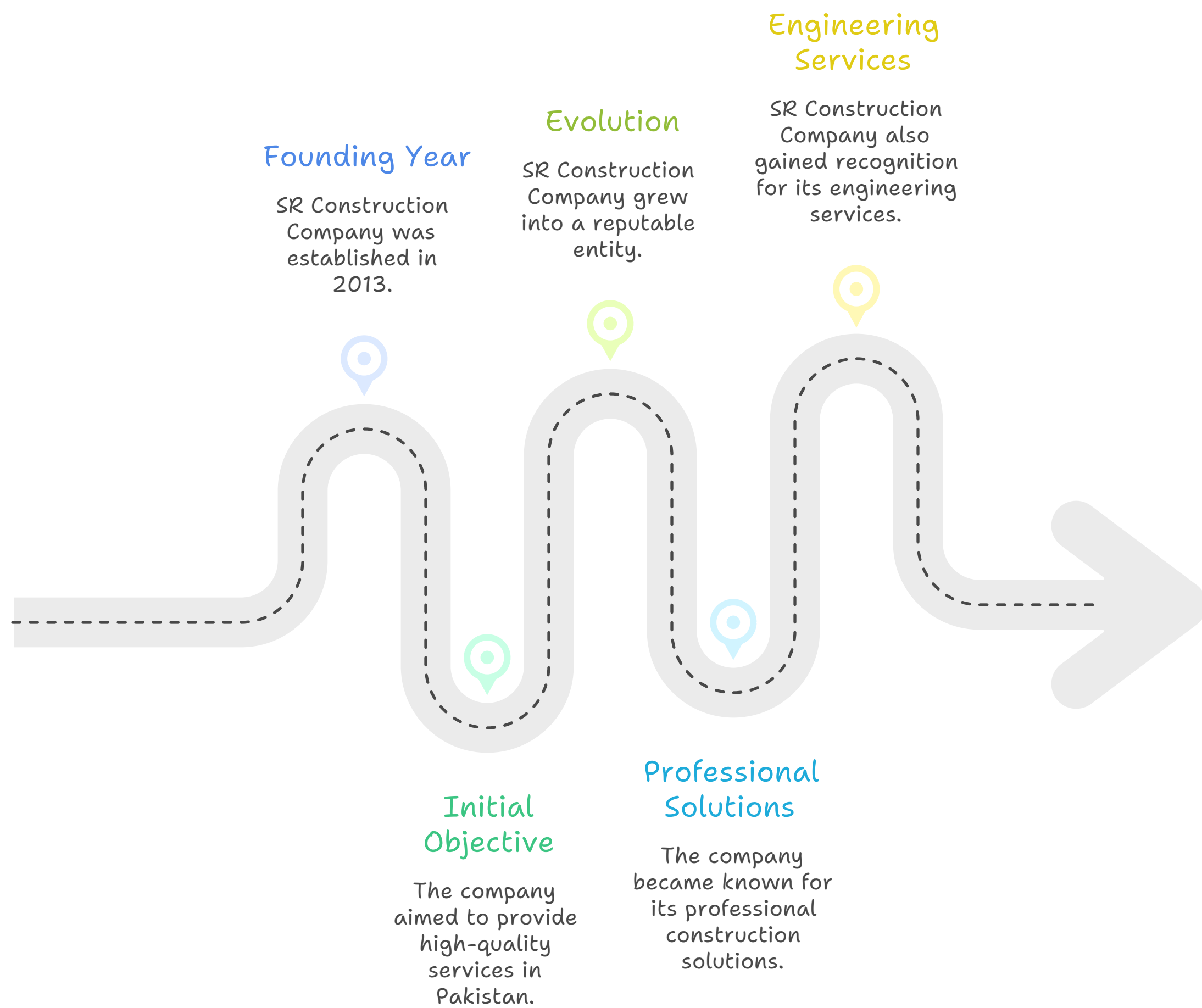
Showcasing commitment to excellence and reliability in all projects.

Made with Napkin

Company Overview

M/S SR Construction Company was founded in 2013 with a clear objective: to provide high-quality engineering, construction, and general supply services to various sectors in Pakistan. The company has since evolved into a reputable entity known for its professional construction solutions and engineering services.

Evolution of SR Construction Company



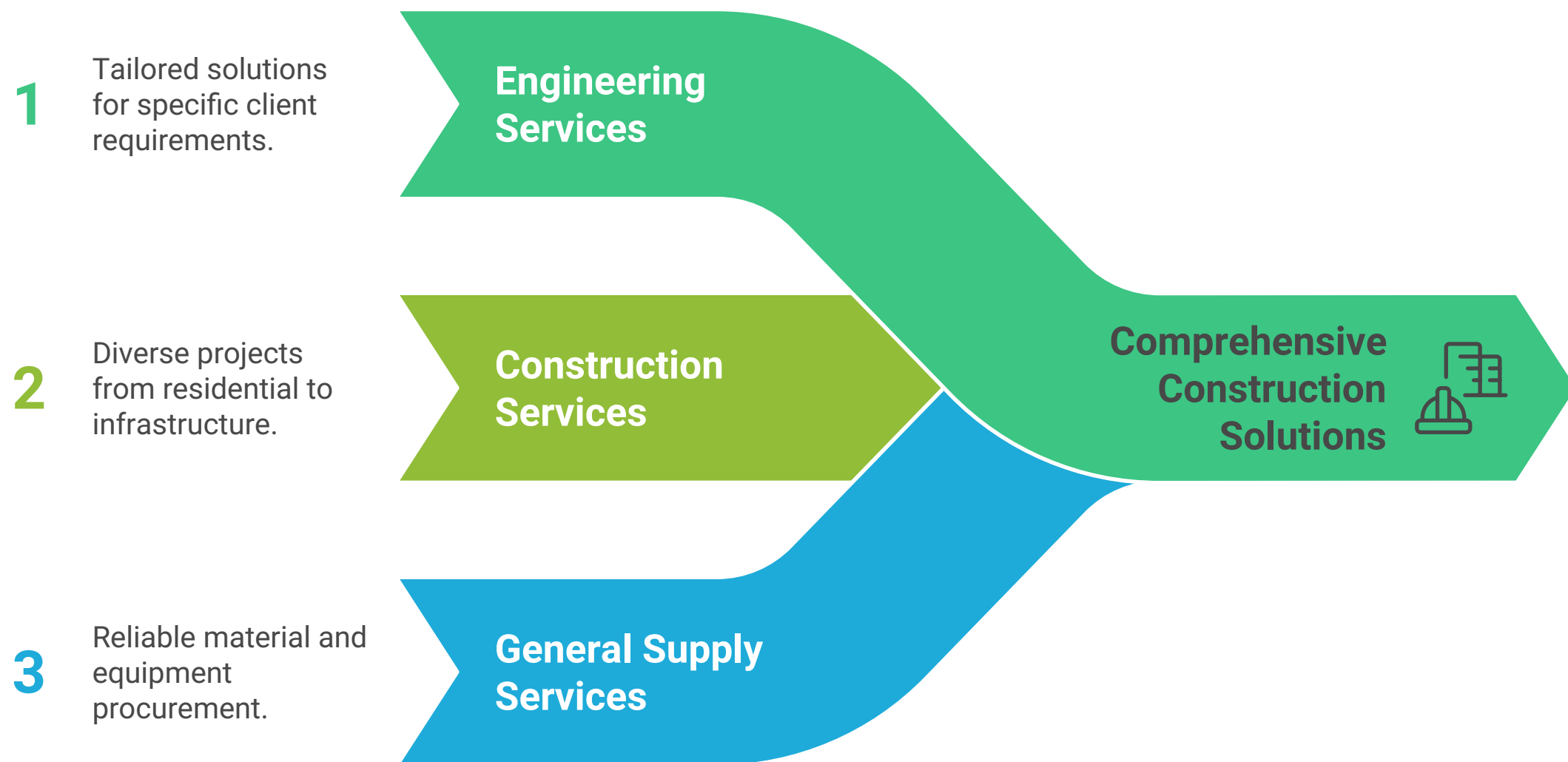
Made with  Napkin

Core Services

The core services offered by M/S SR Construction Company include:

- **Engineering Services:** Providing comprehensive engineering solutions tailored to meet the specific needs of clients.
- **Construction Services:** Delivering a wide range of construction projects, from residential buildings to large-scale infrastructure developments.
- **General Supply Services:** Ensuring reliable procurement and supply of materials and equipment necessary for construction and engineering projects.

Building Success Together

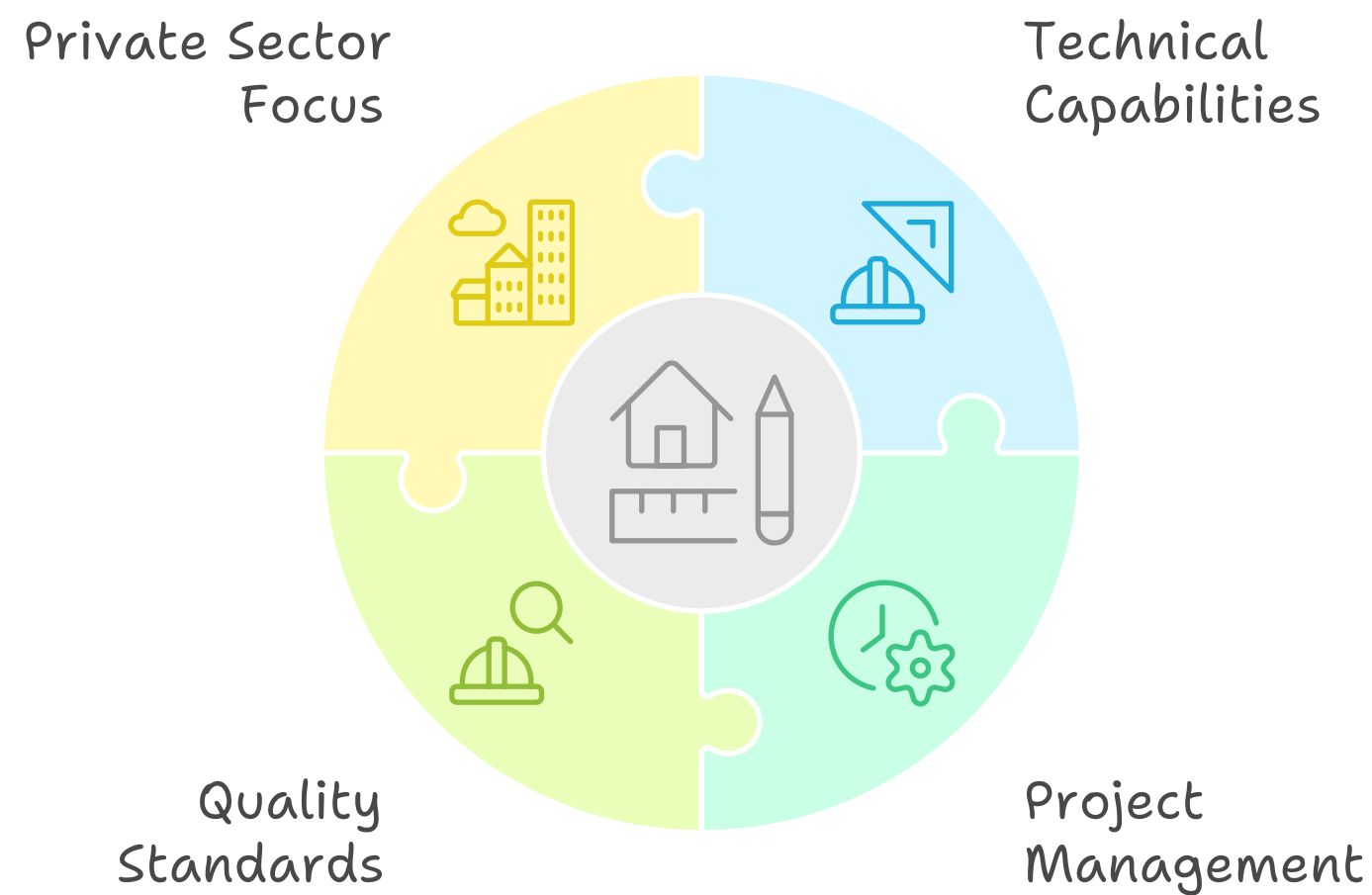


Made with  Napkin

Growth and Development

Since its inception, M/S SR Construction Company has successfully completed numerous projects across the private sector. The company has demonstrated strong technical capabilities and efficient project management, which have been pivotal in maintaining high-quality standards throughout its operations.

SR Construction Company's Success Factors



Made with Napkin

Registration with Pakistan Engineering Council (PEC)

In 2020, M/S SR Construction Company achieved a significant milestone by registering with the Pakistan Engineering Council (PEC). This registration has enhanced the company's ability to undertake government and large-scale infrastructure projects. Following this registration, the company has successfully executed several government-funded construction projects, further solidifying its presence in the public sector.

Empowering infrastructure development through PEC registration.

Expanded project opportunities
Access to government and infrastructure projects

Limited project scope
Inability to undertake large projects



Made with Napkin

Reputation and Commitment

M/S SR Construction Company has built a solid reputation characterized by:

- **Timely Project Delivery:** The company is known for completing projects within the stipulated timeframes, ensuring client satisfaction.
- **Quality Workmanship:** A commitment to high-quality standards is evident in every project undertaken, reflecting the company's dedication to excellence.
- **Transparent Business Practices:** The company operates with integrity, ensuring transparency in all dealings with clients and stakeholders.

Core Strengths of SR Construction Company



Timely Project Delivery

Completes projects within deadlines, ensuring client satisfaction.



Quality Workmanship

Maintains high standards in every project, reflecting excellence.



Transparent Business Practices

Operates with integrity and transparency in all dealings.

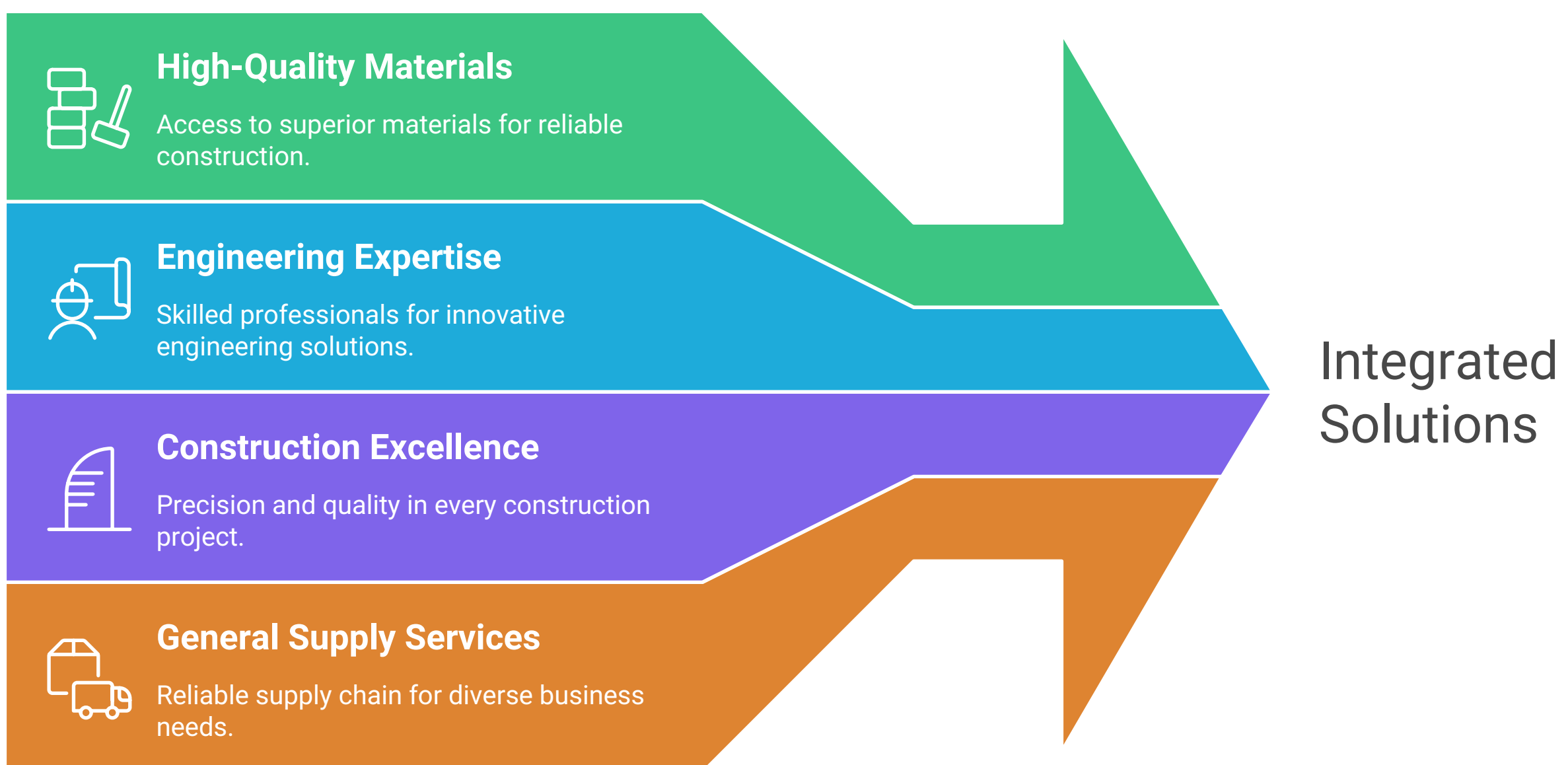
Made with  Napkin

Team and Partnerships

The strength of M/S SR Construction Company lies in its skilled technical team and experienced management. The company prides itself on having a workforce that is not only qualified but also dedicated to delivering exceptional results.

Additionally, M/S SR Construction Company has established strong partnerships within its supply chain, enabling it to procure high-quality materials and resources efficiently. This network of partnerships enhances the company's ability to deliver integrated solutions in engineering, construction, and general supply services.

Building Bridges with Partnerships



Made with  Napkin

Clientele

M/S SR Construction Company serves a diverse clientele, including:

- **Government Departments:** Engaging in various public sector projects that contribute to national development.
- **Non-Governmental Organizations (NGOs):** Collaborating on projects aimed at social welfare and community development.
- **Corporate Organizations:** Providing construction and engineering services tailored to the needs of businesses.
- **Private Clients:** Delivering personalized services for residential and commercial projects.

SR Construction's Client Base

